

## ATX EVSE Fuse



### FEATURES:

- 1000 VDC EVSE fuse
- Rated Current: 100-600 A
- Rated Breaking Capacity: 50 kA
- Dimensions: 30x65 mm, 38x70 mm
- General purpose fuse for EV charging equipment
- Ref. to UL 248-13
- Approvals: UL(File: E485737)
- Recommended fuse holder: BFR087-35-M8,  
BFR099-70-M10

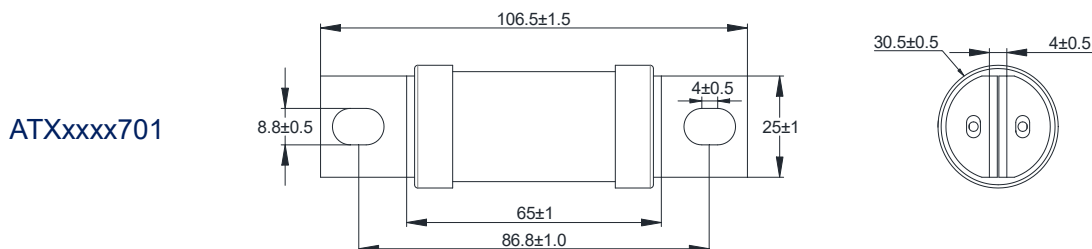
### ELECTRICAL SPECIFICATIONS

Type	Part Number	Rated Current	Ampere Code	Rated Voltage	Breaking Capacity	Dimensions and Bolt Size
Single	ATX3100701	100A	3100	1000 VDC	50 kA@1000 VDC	30x65mm Bolt Size: M8
	ATX3125701	125A	3125			
	ATX3160701	160A	3160			
	ATX3200701	200A	3200			
Single	ATX3250C01	250A	3250	1000 VDC	50 kA@1000 VDC	38x70mm Bolt Size: M11
	ATX3315C01	315A	3315			
	ATX3350C01	350A	3350			
Twins	ATX3400C01	400A	3400			
	ATX3500C01	500A	3500			
	ATX3600C01	600A	3600			

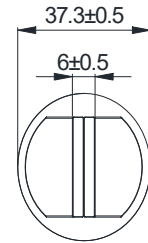
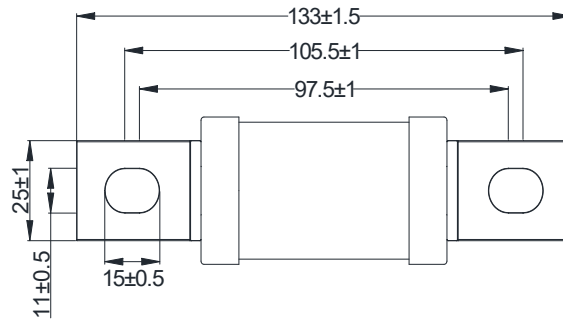
### Note:

(1) Temperature Rise:  $\leq 50K$  of 50% rated current.

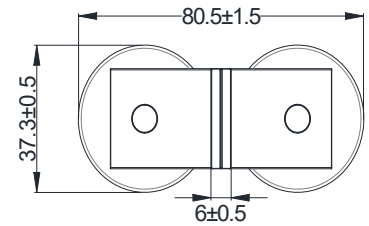
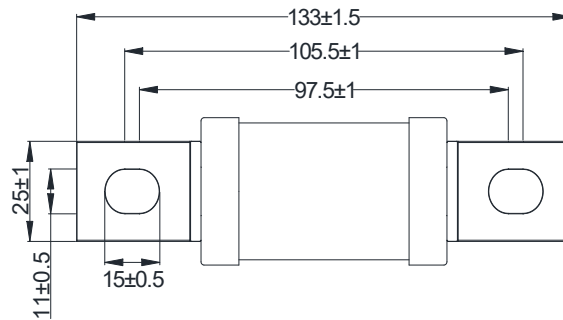
### DIMENSIONS (mm)



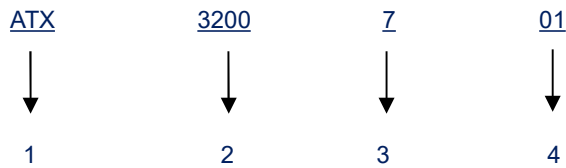
ATXxxxxC01(Single)



ATXxxxxC01(Twins)



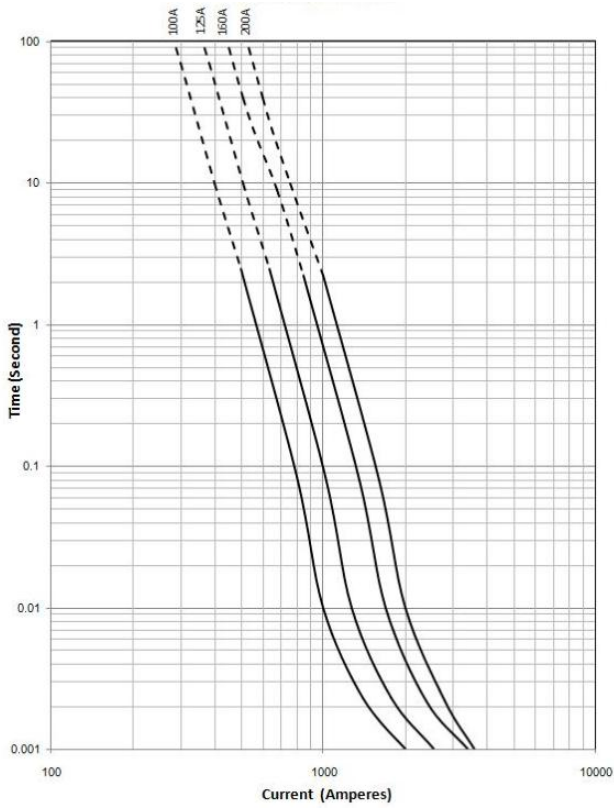
**PART NUMBER SYSTEM**



- 1 .....Product Series ..... ATX
- 2 ..... Ampere Code ..... 200 A (see ampere code column of electrical specifications)
- 3 ..... Size ..... 7: 30x65 mm, C: 38x70mm
- 4 ..... Supplementary Code ..... 01: default

### TIME CURRENT CURVE

ATXxxxx701



ATXxxxxC01

